



LONGSANDS LINK – 12th March 2021

Welcome Back

It was lovely to see everyone back at school this week, and we are sure the children were pleased to see their friends again. I am sure you will join us in thanking our fabulous PTFA for their generous and thoughtful Care Bear gift on the first day back for every child in school.

YEAR 1 – HEARING TESTS

This week your child will have brought home a letter from the NHS Audiometrician who will be visiting school in the coming weeks to screen the hearing of the children in Year 1. Please complete your consent slip and return this back to school as soon as possible. Thank you

LUNCH MENUS

We are currently waiting to receive the new lunch menu through from the Lancashire Catering team. Keep a look out in the next week or so, for your child bringing home the new Spring and Summer menu for those children who currently have school lunches and Favourite Friday meals.

OUR SCHOOL DAY

Thank you to all the parents and carers who are helping us to keep everyone safe by sticking to their class bubble times, entering and leaving school by the correct entrances and exits, and socially distancing. Just as a gentle reminder though, please try to drop off/collect your child and then leave straight away, as chats can sometimes delay another year group bubble.

Have a lovely weekend!

SCHOOL LUNCH MENU

WC 15/03/21

WEEK 2

Pupils of the Week

RECEPTION: **Dougie**

YEAR 1: **Harry**

YEAR 2: **Amelia**

YEAR 3: **Skye**

YEAR 4: **Isla**

YEAR 5: **Aleesia**

YEAR 6: **Bobby**

ARE YOU ENTITLED?

If you think that you may be entitled to Free School Meals, don't forget to apply in order to receive this and other associated benefits. School will also receive funding for this via the Pupil Premium scheme even if you decide to continue to bring a packed lunch.

For more information contact the Area Education Office on **01772 532109**

ABSENCES

If your child is not well enough for school, or will be late in due to an appointment, please ensure that you contact school by 9.00am either by telephone, email to the school office, or by submitting an absence form on the school website. Thank you

Tel: 01772 795676

Email: office@longsands.lancsngfl.ac.uk

Website: www.longsandscp.org.uk

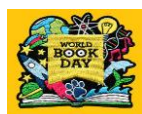
CONTACT DETAILS

Do we have your most up to date contact details and email address? If not, please either send a letter in with your child or email the office directly at

office@longsands.lancsngfl.ac.uk

So that we can update our records.

Thank you



WORLD BOOK DAY

Well done to everyone that came to school in their pyjamas as part of our World Book Day activities today.

APPOINTMENTS

We appreciate that it is often difficult to obtain appointments at the moment, but whenever possible please try to make them outside of school hours, or after 1.30pm. Thank you

Happy Birthday

Alfie, Prince and Max

Longsands Values

RECEPTION: **Max**

YEAR 1: **Kane**

YEAR 2: **James**

YEAR 3: **Lochlan**

YEAR 4: **Eloise**

YEAR 5: **Ruben**

YEAR 6: **Sara**

PTFA ZOOM MEETING

The PTFA will hold their next meeting by Zoom on **Thursday 18th March at 7.30pm.**

Anyone is welcome to attend – please email the PTFA at **longsandsptfa@gmail.com** for the joining link by Wednesday 17th March.

LATERAL FLOW TESTING

NHS Test and Trace recently announced that all adults in households with school and college aged children without symptoms can now access regular rapid coronavirus (COVID-19) testing. It is entirely your own choice if you decide to take up this opportunity. The test kits are fast and easy to use, as well as being completely free. As long as you are 18 years of age, you can collect test kits from your local test site from 1.30pm until 7.00pm, or you could order online. Undertaking regular, rapid testing helps reduce transmission of the virus for those who may not be displaying symptoms. Children of primary school age (without symptoms) are not being asked to take a test. Should you have any queries regarding the tests please call 119 (free from mobiles and landlines). Their lines are open every day from 7am to 11pm.



Remember to regularly wash your hands.



Our target attendance is 96%.

RECEPTION: 98.43%

YEAR 1: 96.66%

YEAR 2: 97.86%

YEAR 3: 95.50%

YEAR 4: 94.94%

YEAR 5: 98.15%

YEAR 6: 96.09%



Poppy aged 9

!!
~

Missing Black & White Long Haired Cat 🐱 . Hi
I have a missing cat, she's black and white long haired, she was a rescue cat, very timid, hopefully not gone far she shimmered herself from under the gate but always come back within 15 minutes. Been missing for 5 hours. Hates rains and loves warmth. Please please if anybody see's her, message me. Many thanks
XxX

PLEASE CALL

07841975011/07838245315

YEAR 1 HEARING TESTS - IMPORTANT

PLEASE RETURN THE CONSENT SLIP TO SCHOOL AS SOON AS POSSIBLE



Lancashire Teaching
Hospitals

NHS Foundation Trust

CHILDREN'S HEARING ASSESSMENT SERVICE

Fulwood Clinic, 4 Lytham Road, Fulwood PR2 8JB

Tel: 01772 777455

The audiometrician will soon be going into your child's school to screen the hearing of children in Year 1. Your child's hearing is very important to their development and school progress.

The most up to date safety measures will be in place to protect against the spread of Covid 19.

The test involves your child wearing headphones and lasts only a few minutes. The test is only a screening test and if your child fails it does not necessarily mean that he or she has a significant hearing loss. It does mean however, that they will need to be retested.

You will be informed of the results by letter. If your child fails the screening your child will be retested in school approximately one month after testing where possible. The school will be informed of any children that need to be retested.

If you have any concerns about your child's hearing, or any other questions, please contact the Children's Hearing Assessment Service on the number above.

PLEASE SIGN AND RETURN THE CONSENT SLIP TO SCHOOL IF YOU ARE HAPPY FOR THIS TEST TO GO AHEAD.



Child's Name.....(Please print name)

Date of Birth.....School.....Class.....

I agree to my child having his/her hearing screened by the audiometrician.
I have parental responsibility

Signed.....Relationship to child.....



PLEASE PRINT YOUR NAMEDATE.....

Please tick if any of the following apply:

- ☐ My child is currently under review by ENT or Paediatric Audiology because of hearing concerns
- ☐ My child wears hearing aids
- ☐ My child has a programmable shunt (PVP Shunt)
- ☐ My child has a known hearing loss – Please give details.....

Parents with children at nurseries, schools and colleges

A guide to regular rapid Covid-19 testing



Regular rapid testing is now available for parents, their households and bubbles.

Regular rapid testing is a fast and easy way to find out if you have coronavirus and help protect your loved ones and community. It's free and takes around 30 minutes.

Why introduce regular rapid testing?

Up to 1 in 3 people who have Covid-19 have no symptoms and could be spreading it without knowing.

Regular rapid testing is now available for parents of nursery, school children and college students. As well as adults in their households, childcare and support bubbles.

Regular testing for people without symptoms is already taking place across the country. Thousands of people who didn't know they had the virus have been able to take action to stop the spread of the disease.

As lockdown restrictions ease, getting into the **regular habit of twice weekly testing** will play an important role in getting back to normal; **alongside the vaccine, following the hands, face, space guidance, and social distancing measures.**

Regular testing for school staff and students

Regular rapid testing is already **available to all staff** at nursery, primary and secondary schools and colleges.

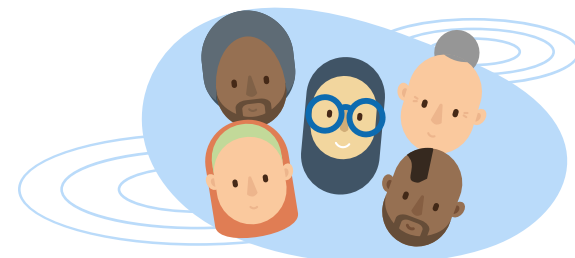
Secondary school and college students aged 11 and above will continue to access regular rapid tests directly through their school or college. And we continue to encourage them to get tested.

On return they will initially be supervised while testing at school and then continue to test themselves at home with test kits they will get from school or college.

Nursery and primary school children are not being asked to be tested as evidence continues to show that children and young people are at low risk from Covid-19 and are very unlikely to get seriously ill.

What is the benefit to you?

By taking part in regular rapid testing, you'll be protecting yourself and your loved ones. And helping us all get back to a more normal way of life.



How does it work?

It's a simple swab test you can do at home, school, work or test site, using a Lateral Flow Device (LFD). It takes around 30 minutes to find out if you have the virus.

The test detects viral proteins that are present when someone has Covid-19. Research from Public Health England and Oxford University shows that they pick up the vast majority of people in the most infectious stage of the disease. With up to 1 in 3 people who have the virus showing no symptoms – they could be spreading it without knowing.

Testing should take place twice a week, every three – five days, ideally in the morning. Why not add this to your morning routine?

If you test negative, you can continue to go to work. You should still strictly follow all other government guidelines and avoid all unnecessary contact. If you, your household or bubble test positive, you should all self-isolate immediately. And then the person who has tested positive should also take a confirmatory PCR test and follow latest government guidance.

For more information visit gov.uk/guidance/understanding-lateral-flow-antigen-testing-for-people-without-symptoms



YouTube Introduction to Rapid Lateral Flow testing

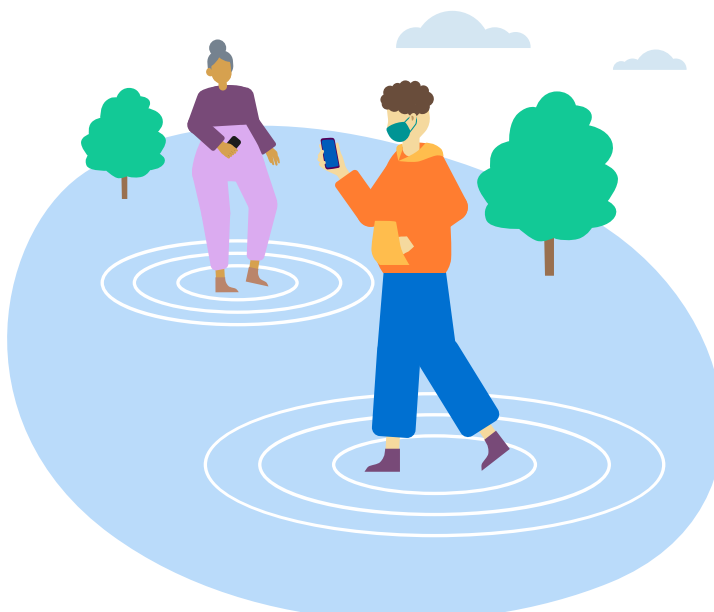


Reporting your test

You should **report your results online straight away**, even if your result is negative or void. It's easy to do at: gov.uk/report-covid19-result

Results can also be reported via **telephone by calling 119** (free from mobiles and landlines). Lines are open every day, 7am to 11pm.

If you have tested positive, you can also check to see if you are eligible for the £500 Test and Trace Support Payment.



Where can I get tested?

If you are a parent or adult of a household, childcare or support bubble you can either:

1. Get an assisted test at work if it is available.
2. Attend a test site to get tested (where you will be able to see how to take the test) or pick up tests to do at home.
3. Order a test online to do at home.

To find out how to get a free rapid Covid-19 test visit gov.uk/coronavirus-school-household-testing

Regular rapid testing is for those without symptoms of Coronavirus. If you have symptoms, you should continue to book through nhs.uk/coronavirus